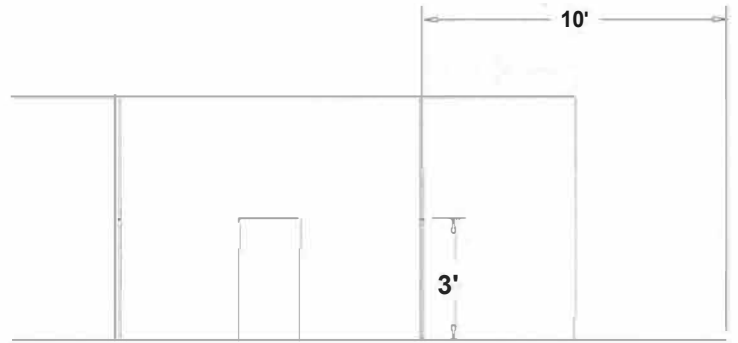


End-cap Booth 8' x 10' booths

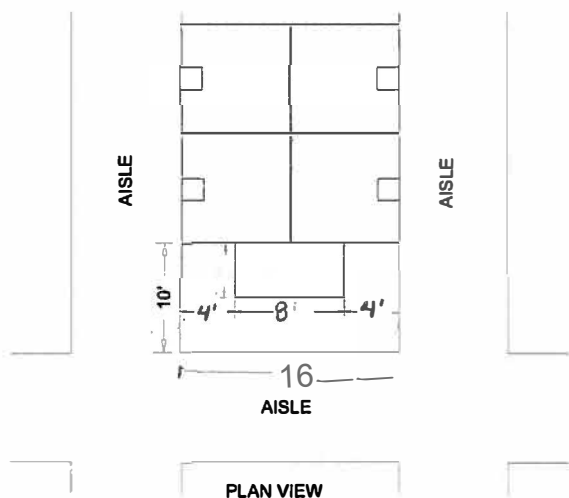
An End-cap Booth is exposed to aisles on three sides and comprised of two booths.

Dimensions

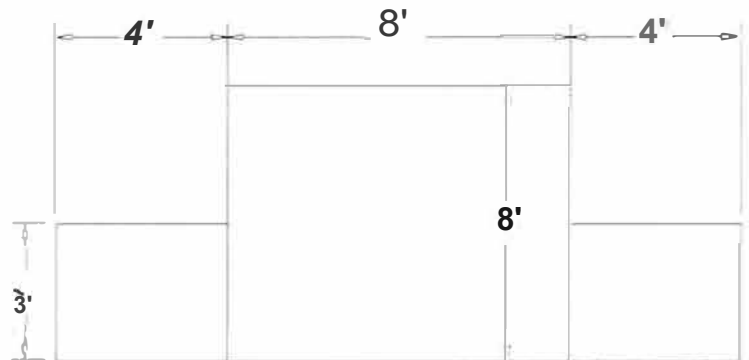
End-cap Booths are generally 10ft (3.05m) deep by 16 ft (6.10m) wide. The maximum back wall height of 8ft (2.44m) is allowed only in the rear half of the booth space and within 4ft (1.52m) of the two side aisles, with a 3ft (1.22m) height restriction imposed on all materials in the remaining space forward to the aisle.



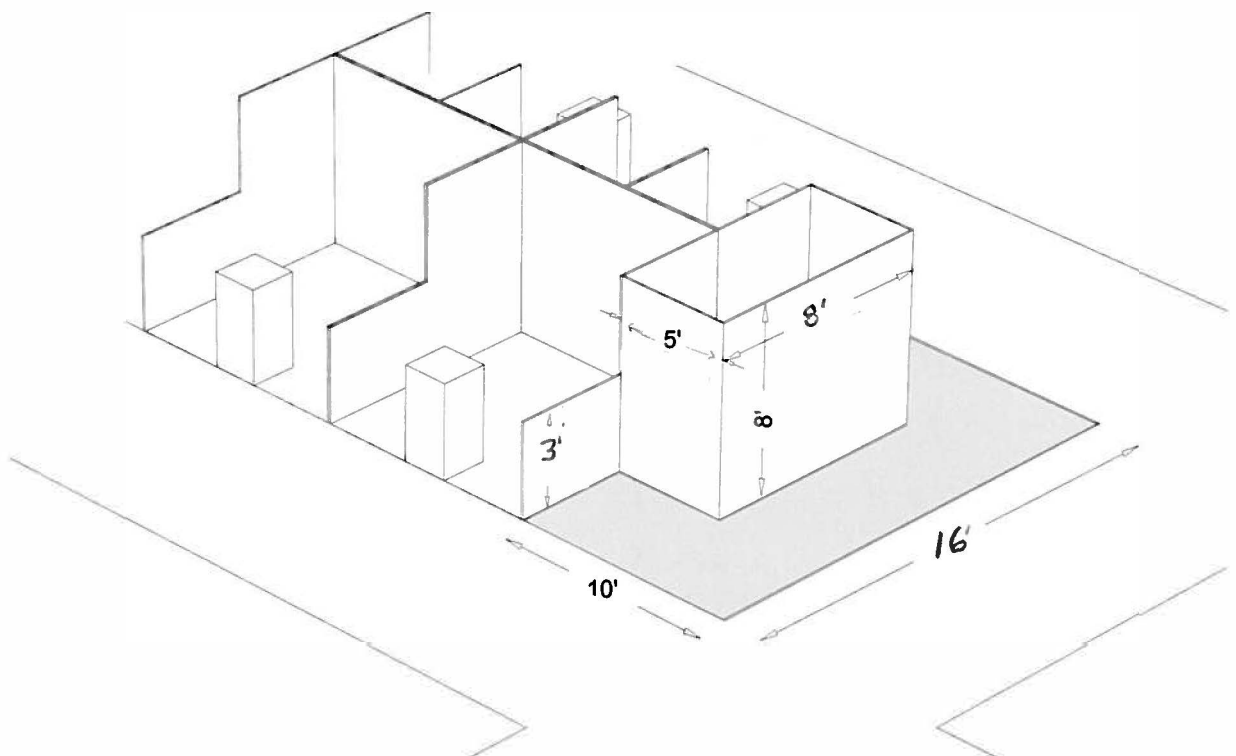
LEFT SIDE VIEW



PLAN VIEW



FRONT VIEW



END-CAP BOOTH
Example with backdrop pop-out banner