

Speakers – Clinical/Care Practices

CE SESSION #1

SNF QRP Measures - Present and Future (Clinical/Care Practices)

Presenter(s): Carol Maher, Director of Education, Hansen Hunter & Co.

Speaker Bio: Carol Maher is a Board Certified Gerontological Registered Nurse with over 30 years long term care experience and has worked in long term care in many roles. Beginning as a nursing assistant, she later became a charge nurse, Nurse Manager and then RNAC. Most recently she was the Senior VP of Utilization Services and Director of Reimbursement for large multi-facility organizations. She has worked as one of the Gold Standard nurses for MDS 3.0, serving on the RAP workgroup to prepare the way for the CAAs for MDS 3.0, and participating on a number of Technical Expert Panels related to MDS, Quality Measures and care planning. She is a frequent author of articles related to the RAI process and PPS and has recently authored a book titled Long-Term Care MDS Coordinator's Field Guide. Carol served as a member of the AANAC Board of Directors for 9 years. She is presently serving on the AANAC Expert Advisory Panel and as an AANAC Master Teacher. Ms. Maher is the Director of Education for Hansen Hunter & Co. providing MDS and Medicare classes across the country, presenting monthly educational webinars and completing compliance audits.



CE SESSION #5

Preventing Falls and a Decline in Function (Clinical/Care Practices)

Presenter(s): Jeri Lundgren, President, Senior Providers Resource

Speaker Bio: Jeri Ann Lundgren, RN, BSN, PHN, CWS, CWCN, CPT has been working in long term care since 1990. She has focused on the effects of immobility and worked with Exercise Physiologists, Physical Therapists, Personal Trainers, Ergonomics and Nursing to develop falls prevention and mobility enhancement programs. She is a Certified Personal Trainer through W.I.T.S./Florida Gulf Coast University and specializes in fitness for seniors.



CE SESSION #10

What Works: Improving Care of Residents with Dementia (Clinical/Care Practices)

Presenter(s): Amy Osborn, Executive Director, Health Services Advisory Group

Speaker Bio: Amy Osborn is the Executive Director for Health Services Advisory Group, the CMS Quality Innovation Network-Quality Improvement Organization (QIN-QIO) in Florida. Ms. Osborn oversees project teams working on CMS initiatives within hospitals, home agencies, nursing centers, and physician offices. Ms. Osborn served 12 years as a Florida Nursing Home Administrator.



CE SESSION #10

What Works: Improving Care of Residents with Dementia (Clinical/Care Practices)

Presenter(s): Bob Murphy, Nursing Home Administrator, Whispering Oaks

Speaker Bio: Bob Murphy has been a licensed Nursing Home Administrator for 33 years and is currently the Administrator for Whispering Oak in Tampa. For the past 6 years Bob has served as the senior examiner for the AHCA silver quality award program.

CE SESSION #10

What Works: Improving Care of Residents with Dementia (Clinical/Care Practices)

Presenter(s): Dorothy Nattiel, Director of Rehabilitation, Select Rehabilitation

Speaker Bio: *Coming Soon*

CE SESSION #10

What Works: Improving Care of Residents with Dementia (Clinical/Care Practices)

Presenter(s): Valerie Agostino, Director of Nursing, Evergreen Woods Health & Rehabilitation Center

Speaker Bio: Valerie first heard her call to nursing as a young girl growing up in New York. At the age of 12 she began volunteering at a local nursing home, and continued working her way up from a Nursing Assistant, to L.P.N., then to R.N. Now currently Director of Nursing at Evergreen Woods Health and Rehab. Valerie is a recipient of Florida's "Nurse Administrator of Distinction Award", she was also instrumental in winning the national awards for Best Nursing Home, Bronze and Silver awards, and is currently a contender for the National Gold Award. Valerie has also led her team to safely reduce restraints and off label use of antipsychotics to zero in her center



CE SESSION #19

Take Control of Your Controlled Substances (Clinical/Care Practices)

Presenter(s): Kelley Schild, Partner, Partner Care Pharmacy

Speaker Bio: Kelley C. Rice-Schild was the fourth generation of her family to own and operate THE Floridian, a 90 bed facility in Miami. The facility was sold in 2014. Both her grandparents, Jack and Julia Rice, were founding members of the Florida Health Care Associations. Kelley was an FHCA Statewide President in 2002. Throughout her career, Kelly Rice-Schild has been involved in the legislative arena. This is demonstrated by her testimony on long term care issues on the state and national level, participation in press conference and her work as a contract lobbyist. In 2010, she opened Partner Care Pharmacy Services with partner, Blanca Morales. Partner Care serves independent living, assisted living, skilled nursing facilities and hospice patients in South Florida.



CE SESSION #19

Take Control of Your Controlled Substances (Clinical/Care Practices)

Presenter(s): Blanca Morales, Pharmacy Director, Partner Care Pharmacy

Speaker Bio: Blanca V. Morales is a Registered Pharmacist and Consultant Pharmacist. Ms. Morales has worked in the long term care setting for twenty years. She currently is a partner and pharmacist at Partner Care Pharmacy Services. Partner Care Pharmacy Services provides pharmacy services for skilled nursing centers, assisted living centers and community patients.



CE SESSION #25

New Requirements for Participation – Knowing Your Organization, Your Residents, Your Staff and Your Resources (Clinical/Care Practices)

Presenter(s): Leah Killian-Smith, Director of Quality Assurance & Government Services, Pathway Health

Speaker Bio: Leah Killian-Smith has over 20 years of experience in post-acute care. Her expertise includes leadership positions in several different settings including, stand-alone long term care centers and campus settings with affordable housing, home care, and assisted living. Her accomplishments include the successful closure of sixteen long term care centers and the opening of a new senior living campus. Leah has experience with coding compliance and billing systems, MDS 3.0 training nationwide, reimbursement, interim management, survey recovery, government turn around projects, and the creation and implementation of performance improvement plans to ensure successful operations.



CE SESSION #31

Infection Prevention and Control Changes, Updates and Quality Results (Clinical/Care Practices)

Presenter(s): Susan LaGrange, Director of Education, Pathway Health

Speaker Bio: Susan LaGrange's 24 years of experience includes a diverse range of positions such as Director of Nursing, Administrator, and Consultant. Her successful career includes extensive leadership roles in which her knowledge and expertise have assisted organizations in regulatory, clinical and operational turn-a-rounds. In her past 11 years as a Consultant with Pathway Health Services, she has assisted quality improvements in a multitude of organizations and has become a nationally renowned trainer in Restorative Nursing

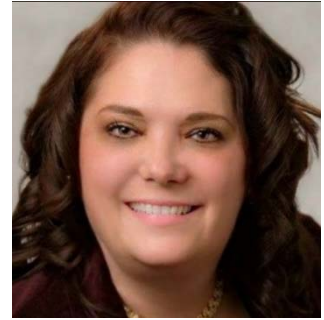


CE SESSION #37

LTPAC Clinical Updates (Clinical/Care Practices)

Presenter(s): Jennifer Leatherbarrow, Clinical Consultant, Richter Healthcare Consultants

Speaker Bio: Jennifer Leatherbarrow RN, BSN, RAC-CT, QCP is a Clinical Consultant at Richter Healthcare Consultants. Ms. Leatherbarrow has a long tenure in health care, including ten years in the LTPAC sector, having served in numerous clinical and management roles. She is an experienced trainer and very familiar with regulatory requirements. At Richter Healthcare, Jennifer is a member of the Richter Consulting Team and works directly with LTPAC clients across the country to offer best practice solutions to operational challenges.



CE SESSION #37

LTPAC Clinical Updates (Clinical/Care Practices)

Presenter(s): Celeste Rininger, Clinical Consultant, Richter Healthcare Consultants

Speaker Bio: Celeste Rininger has over 30 years as a Registered Nurse with experience in the local, regional and corporate levels of long term care (LTC) management. She possesses a varied background in long term care, having served as MDS Coordinator, Director of Staff Development, Nurse Liaison, regional trainer and Director of Nursing. In her role as Clinical Consultant, Ms. Rininger is involved with client audits and training for Billing Compliance, nursing, and survey readiness. She helps to design customized training programs on topics related to clinical documentation and MDS 3.0.



CE SESSION #42

Managing Patient-Centered Care in a Changing Reimbursement World
(Clinical/Care Practices)

Presenter(s): Angela Edney, National Clinical Director, Aegis Therapies

Speaker Bio: Angela Edney, OTR, is a national clinical director for Aegis Therapies. Presently providing field support and training for Clinical Specialists, managers, therapists, and customers, she has over 30 years of experience and is an established presenter for several national, state, and professional organizations.



CE SESSION #42

Managing Patient-Centered Care in a Changing Reimbursement World (Clinical/Care Practices)

Presenter(s): Reda Shihadeh, Area Vice President, Aegis Therapies

Speaker Bio: Reda Shihadeh, OTR, is an Occupational Therapist who works for Aegis Therapies with over 20 years of experience in geriatrics and management. Currently an Area Vice President, Reda proudly previously served as a Clinical Leader, taking part in teaching different clinical courses.

CE SESSION #42

Managing Patient-Centered Care in a Changing Reimbursement World (Clinical/Care Practices)

Presenter(s): Jessica Pranke, Clinical Specialist, Aegis Therapies

Speaker Bio: Jessica Pranke, M.S., CCC-SLP, is currently a Clinical Specialist for Aegis Therapies. She graduated with an M.S. in Speech-Language Pathology from University of South Florida in 2003. Since 2004 with Aegis Therapies, she has served in both operational and clinical roles.



CE SESSION #47

A Paradigm Shift in Post-Acute Care: Keeping Pace with Changes (Clinical/Care Practices)

Presenter(s): Victoria Franco, Area Vice President, Aegis Therapies

Speaker Bio: Victoria Franco, RPT, graduated from Universidad del Valle, Cali-Colombia. She has been a physical therapist for 25 years. She is currently an Area Vice President for Aegis Therapies. Victoria has a background in multiple settings such as home health and skilled nursing centers. Her experience encompasses clinical and managerial tasks.



CE SESSION #47

A Paradigm Shift in Post-Acute Care: Keeping Pace with Changes (Clinical/Care Practices)

Presenter(s): Reda Shihadeh, Area Vice President, Aegis Therapies

Speaker Bio: Reda Shihadeh, OTR, is an Occupational Therapist who works for Aegis Therapies with over 20 years of experience in geriatrics and management. Currently an Area Vice President, Reda proudly previously served as a Clinical Leader, taking part in teaching different clinical courses.

CE SESSION #54

Memory Care: Improving Outcomes Through Nutrition Resources (Clinical/Care Practices)

Presenter(s): Maria DeNicola, Business Solutions Specialist, Registered Dietitian Nutritionist, Gordon Food Service

Speaker Bio: Maria DeNicola's career and passion for food and nutrition services was inspired by spending time with her father at an early age in the kitchens and corporate dining restaurants in NYC. As an RD,LD/N Maria has changed the image, quality of food and nutrition services in health care communities. Inspiring and encouraging “out of the box thinking” from the team- including Executive Chefs, Dietitians, FS Managers and staff. This was achieved through cultural transformation, training, improved technology, and “making food that customers want to eat.”



CE SESSION #58

CMS Region IV CMP Quality Improvement Initiative (Clinical/Care Practices)

Presenter(s): Betty Shiels, Director, CMS Region IV LTC Quality Improvement Initiative, University of Louisville, Kent School of Social Work

Speaker Bio: Betty Shiels, PhD-C, LCSW, MSSW, has served on the Board of the National Association of Geriatric Education Centers (NAGEC) and the National Association of Geriatric Education (NAGE).